



# MC9500 Series

## EMC Configuration and Accessories Guide

*Designed to assist customers and partners with model and  
configuration guidance*



## MC9500 Series

- CONFIGURATION AND ACCESSORY GUIDES are available on [The Source](#) and [Partner Central](#)
- Also see [www.zebra.com/mc9500](http://www.zebra.com/mc9500) and the MC9500-K Configuration and Accessories Guide
- MC9500 Series is comprised of 4 Models:
  - MC9590-Integrated voice and data models, without WAN (with and without camera)
  - MC9596-Integrated voice and data models, with GSM/HSDPA (with and without camera)
  - MC9598-Integrated voice and data models, with CDMA/EVDO (with and without camera)
  - MC959B-Data only models (with and without camera)
- With 57 total Configurations

Find Product Information in the **EMC Product Portfolio** on [The Source](#) and [Partner Central](#)



The graphic is a promotional slide for the 2014 EMC Product Portfolio. It features a blue header with the text "Partner Central". Below the header, the main title "2014 EMC PRODUCT PORTFOLIO" is displayed in large, bold, blue letters. To the right of the title, there are four small images illustrating different use cases: "CUSTOMER FACING" (two women at a counter), "FIELD MOBILITY" (a person in a green shirt using a device in a store), "TASK SPECIFIC" (a person in a white lab coat using a device), and "INDUSTRIAL MOBILITY" (a person in an orange safety vest using a device). On the left side, under the heading "ENTERPRISE MOBILE COMPUTING", there is a list of resources and content:

- EMC Resources
- Zebra Solutions At A Glance
- Enterprise Mobile Computing
  - Knowledge Worker Portfolio
  - Line Worker Portfolio
  - EMC Software & Solutions
- Topical Content
  - MSI OS Strategy
  - The Value of Enterprise Class Products

All MC9500 series accessories are compatible and backward compatible including: cradles, holsters and cables.

## MC9500 Series Configuration Matrix

CONFIGURATION OPTIONS:	MC95XX	OPTION	DESCRIPTION
<b>WAN Option</b>	MC9590-xxxxxxxx	0	WLAN 802.11 a/b/g, No WAN
	MC9596-xxxxxxxx	6	WLAN 802.11 a/b/g, With GSM/HSDPA
	MC9598-xxxxxxxx	8	WLAN 802.11 a/b/g, With CDMA EVDO RevA
	MC959B-xxxxxxxx	B	WLAN 802.11 a/b/g, HSUPA + CDMA EVDO RevA
<b>Form Factor</b>	MC959x-Kxxxxxxxx	K	Brick
<b>Data Capture options (Scanner)</b>	MC959x-xAxxxxxx	A	1D Laser SE950 without camera
	MC959x-xBxxxxxx	B	2D Imager SE4500 without camera
	MC959x-xCxxxxxx	C	1D Laser SE950 with camera
	MC959x-xDxxxxxx	D	2D Imager SE4500 with camera
<b>WAN Carrier options</b>	MC959x-xx0xxxxxx	0	None
	MC959x-xxAxxxxxx	A	Penta-band GSM
	MC959x-xxBxxxxxx	B	Verizon
	MC959x-xxCxxxxxx	C	Sprint
	MC959x-xxGxxxxxx	G	Multicarrier
<b>Operating System Options</b>	MC959x-xxxAxxxxx	A	WM6.1 Classic
	MC959x-xxxBxxxxx	B	WM6.1 Professional
	MC959x-xxxDxxxxx	D	WM6.5 Classic
	MC959x-xxxExxxxx	E	WM6.5 Professional
<b>Operating System Language</b>	MC959x-xxxxAxxxx	A	English
<b>Product Feature: User Input/Keyboard</b>	MC959x-xxxxBxxx	B	VGA Color and 52 key
	MC959x-xxxxCxxx	C	VGA Color and 43 key
	MC959x-xxxxDxxx	D	VGA Color and 29 key (Phone)
	MC959x-xxxxExxx	E	VGA Color and 29 key (Calculator)
	MC959x-xxxxFxxx	F	VGA Color and 29 key (Fingerprint swipe)
	MC959x-xxxxJxxx	J	VGA Color and 43 key (Alpha-prim Bezel-less)
<b>Memory/GPS/RFID options</b>	MC959x-xxxxxx001xx	001	128MB/512MB GPS
<b>Special Character Support options</b>	MC959x-xxxxxxxx00	00	None
	MC959x-xxxxxxxxJP	JP	Japan

## MC9500 Main Models



### MC9500

- MC9590** WLAN 802.11 a/b/g, No WAN
  - WM 6.5 Classic
- MC9596** WLAN 802.11 a/b/g, GSM/HSDPA
  - WM 6.5 Professional
- MC9598** WLAN 802.11 a/b/g, CDMA EVDO RevA
  - WM 6.5 Professional
- MC959B** WLAN 802.11 a/b/g, HSUPA + CDMA EVDO RevA
  - WM6.1 Professional

\*\* Replacements of WWAN Kits are available:

- **WWAN-MC95KA001-001**: WWAN:MC95,HSDPA
- **WWAN-MC95KA001-010**: WWAN:MC95,HSDPA,10PK
- **WWAN-MC95KB002-001**: WWAN:MC95,EVDO-Verizon (US only)
- **WWAN-MC95KB002-010**: WWAN:MC95,EVDO-Verizon,10PK
- **WWAN-MC95KB003-001**: WWAN:MC95,EVDO-Sp (US Only)
- **WWAN-MC95KB003-010**: WWAN:MC95,EVDO-Sp,10PK
- **WWAN-MC95KDW-001**: WWAN:MC95,DUAL WAN DATA ONLY
- **WWAN-MC95KDW-010**: WWAN:MC95,DUAL WAN DATA ONLY 10PK



## MC9500 Keypads

### 43 Key, Alpha Prime

Lowercase alpha characters

Spare keypad part number:  
**KYPD-MC95MF000-000**  
**KY10-MC95MF000-000 (10PK)**

### 52 Key, Alphanumeric Wide

Lowercase alpha characters  
and numeric

Spare keypad part number:  
**KYPD-MC95ME000-000**  
**KY10-MC95ME000-000 (10PK)**

### 29 Key, Numeric Calc

Numeric

Spare keypad part number:  
**KYPD-MC95MH000-000**  
**KY10-MC95MH000-000 (10PK)**

### 29 Key, Numeric Telephony

Numeric

Spare keypad part number:  
**KYPD-MC95MG000-000**  
**KY10-MC95MG000-000 (10PK)**



\*\* Other available variants for Keyboards:

- **KYPD-MC95250-01R:** MC95 5250 Term Emul
- **KYPD-MC9500TE-01R:** MC95 Terminal Emul
- **KY10-MC95250-10R:** MC95 5250 Term Emul, 10PK
- **KY10-MC9500TE-10R:** MC95 Terminal Emul10PK

All replacement keypads are available as snap on, can be changed on site, without sending it to service depot.

## MC9500 Data Capture Methods

### Scan Engines

#### SE950

- 1D Standard Range Laser scanner
- Highly intuitive and accurate aiming line
- Typical read range:
  - 20 mil barcode: 83cm (code39)
  - 40 mil barcode: 91cm (code39)

#### SE4500

- 1D/2D Imager module
- Provides omni directional scanning for 1D and 2D codes.
- Laser crosshair aimer with bright center dot
- Also **HD** (high density) variant available for **DPM** codes.
- Typical read range:
  - 20 mil: 62 cm (code39)
  - 15 mil: 37 cm (PDF417, 2D)



SE950 Scan Engine



SE4500 Scan Engine





# MC9500 Accessories Guide



## Step 1: Choose a charging method



### Single Slot Cradle

#### CRD9500-1000UR

Single slot cradle, requires power supply PWRS-14000-148R and 3 wire AC cord.



The single slot cradle can charge a MC9500 has a micro USB port. For spare battery charging must purchase one slot battery charger **SAC9500-1001CR** and DC “Y” cable **25-122026-01R** separate.

## Single Slot Cradle Accessories



#### 25-124330-01R

Micro USB Cable for the single slot cradle



#### PWRS-14000-148R

Power supply for single slot cradle: 100-240 VAC, 12VDC, 4.16A



#### 23844-00-00R

US AC line cord, 7.5 feet long, grounded, three wire for power supplies.



#### 25-122026-01R

2-way DC cable, required to connect the single slot cradle and one slot battery charger to one PWRS-14000-148R power supply.



#### SAC9500-1001CR

Single slot battery charger uses PWRS-14000-148R and 3 wire AC cord. Can also be combined with the single slot cradle using the 2-way DC cable.



## Step 1: Choose a charging method



**CRD9500-101UES**  
Single Slot Cradle Kit (INT)



The single slot cradle can charge a MC9500 has a micro USB port.



**CRD9500-102UES**  
Single Slot and Spare Battery  
Charger Kit (US)

### Single Slot Cradle Kits

#### **CRD9500-100UES (US)**

**Includes:** Single Slot Cradle CRD9500-1000UR, Power Supply PWRS-14000-148R, and US AC Cord 23844-00-00R.

#### **CRD9500-101UES (INT)**

**Includes:** Single Slot Cradle CRD9500-1000UR and Power Supply PWRS-14000-148R (Must purchase country specific 3 wire AC Cord separately)

### Single Slot Cradle and Battery Charger Kits

#### **CRD9500-102UES (US)**

**Includes:** Single Slot Cradle CRD9500-1000UR, Spare Battery Charger SAC9500-1001CR, "Y" Cable 25-122026-01R, Power Supply PWRS-14000-148R, and US AC Cord 23844-00-00R.

#### **CRD9500-103UES (INT)**

**Includes:** Single Slot Cradle CRD9500-1000UR Spare Battery Charger SAC9500-1001CR, "Y" Cable 25-122026-01R and Power Supply PWRS-14000-148R (Must purchase country specific 3 wire AC Cord separately)

## Step 1: Choose a charging method



### 4 Slot Cradles:

**CRD9500-4000CR** 4 Slot Charge Only Cradle

**CRD9501-4000ER** 4 Slot Ethernet Cradle

 The 4 Slot Charge Only and Ethernet Cradles require Wall Mount KT-116362-01R OR Desk Mount KT-116363-01R. Optional Guide Cups KT-122014-01R available separately.

## Additional Accessories for 4-slot Cradles



### **PWRS-14000-241R**

Power supply for 4 slot cradles:90-264 VAC, 12VDC, 9A



### **50-16002-029R**

DC cable provides power from the power supply to 4 slot cradles.



### **23844-00-00R**

US AC line cord, 7.5 feet long, grounded, three wire for power supplies.



### **KT-116362-01R**

Universal Wall Mounting Bracket, used for mounting the 4 slot cradle on a wall.



### **KT-116363-01R**

Desk Mounting Bracket, used to place the 4-slot cradle on a flat surface.



### **KT-132400-01R**

Mounting bracket for 19" rack, for 4 slot cradles.



### **KT-122014-01R**

Optional Cradle Guides (4Pk), to be used with the 4 slot cradles.

## Step 1: Choose a charging method



**CRD9501-401CES**  
Four Slot Charge Cradle Kit  
(Desk Ready)



**CRD9501-421CES**  
Four Slot Charge Cradle Kit  
(Wall Ready)

### 4-Slot Charge Cradle Kits

#### **CRD9501-401CES (DESK)**

**Includes:** 4Slot charge cradle CRD9500-4000CR, desk mount KT-116363-01R, guide cups KT-122014-01R, P/S PWRS-14000-241R, DC cord 50-16002-029R. Buy 3 wire AC cord separately.

#### **CRD9501-421CES (WALL)**

**Includes:** 4Slot charge cradle CRD9500-4000CR, wall mount KT-116362-01R, guide cups KT-122014-01R, P/S PWRS-14000-241R, DC cord 50-16002-029R. Buy 3 wire AC cord separately.

#### **CRD9501-431CES (RACK)**

**Includes:** 4Slot charge cradle CRD9500-4000CR, rack mount KT-132400-01R, guide cups KT-122014-01R, P/S PWRS-14000-241R, DC cord 50-16002-029R. Buy 3 wire AC cord separately.

### 4-Slot Ethernet Cradle Kits

#### **CRD9501-401EES (DESK)**

**Includes:** 4Slot Ethernet cradle CRD9501-4000ER, desk mount KT-116363-01R, guide cups KT-122014-01R, P/S PWRS-14000-241R, DC cord 50-16002-029R. Buy 3 wire AC cord separately.

#### **CRD9501-421EES (WALL)**

**Includes:** 4Slot Ethernet cradle CRD9501-4000ER, wall mount KT-116362-01R, guide cups KT-122014-01R, P/S PWRS-14000-241R, DC cord 50-16002-029R. Buy 3 wire AC cord separately.

#### **CRD9501-431EES (RACK)**

**Includes:** 4Slot Ethernet cradle CRD9501-4000ER, rack mount KT-132400-01R, guide cups KT-122014-01R, P/S PWRS-14000-241R, DC cord 50-16002-029R. Buy 3 wire AC cord separately.

## Step 1: Choose a charging method



### VCD9500-1000R

Vehicle Cradle with USB pass through (DB15 male connector)



### VBC9500-1000R

Vehicle battery charger. For stand alone charging requires auto charge cable VCC0000-01R. For charging through the vehicle cradle requires jumper cable 25-1222028-01R and vehicle mounting plate KT-122012-01R.

! The vehicle cradle VCD9500-1000R and vehicle spare battery charger VBC9500-1000R are NOT compatible with the premium battery BTRY-MC95EXBA0-01

## Additional Accessories for Vehicle Cradle and Other Vehicle Chargers



### 25-122028-01R

Vehicle jumper cable, required when using the vehicle cradle and the vehicle battery charger together.



### KT-122012-01R

Vehicle mounting bracket, used for mounting the vehicle cradle and the vehicle battery charger side by side in a vehicle.



### 25-129710-01R

Adapter cable for vehicle cradle, USB to RS232 converter db 15 female to db 9 male.



### 25-157080-01R

Adapter cable for vehicle cradle, USB to RS232 converter



### VCC0000-01R

Vehicle charge cable 12/24V barrel jack used to power the vehicle battery charger. (Can also charge the MC95 but requires adapter VAM9500-100R)

## Step 2: Choose battery / battery charging accessories

### Spare Batteries



#### **BTRY-MC95IABA0**

Standard Lithium Ion battery, 4800 mAh  
Pack of 10 spare batteries is also available:  
**(BTRY-MC95IABA0-10)**

#### **BTRY-MC95EXBA0-01**

Premium Lithium Ion battery, 7200 mAh  
Pack of 10 spare batteries is also available:  
**(BTRY-MC95EXBA0-10)**

### Spare Battery Chargers



#### **SAC9500-1001CR**

Single Slot Battery Charger, uses power supply PWS-14000-148R and 3 wire AC cord.



#### **SAC9500-4001CR**

4-slot battery charger, requires wall mount KT-116362-01R OR desk mount KT-116364-01R. Uses power supply PWS-14000-148R and 3 wire AC cord.

### Accessories for battery chargers



#### **PWS-14000-148R**

Power supply for single and 4-slot battery chargers.



#### **PWS-14000-241R**

Power supply used to power four 4-slot battery chargers.



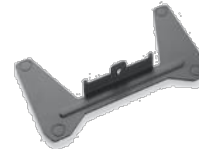
#### **25-85992-01R**

4-way DC cable to connect four 4-slot battery chargers to power supply PWS-14000-241R



#### **23844-00-00R**

US AC line cord, 7.5 feet long, grounded, three wire for power supplies.



#### **KT-116364-01R**

Desk mounting bracket, used for mounting one 4 slot battery charger on a flat surface.



#### **KT-116362-01R**

Wall Mounting Bracket, used for mounting the 4-slot battery charger on a wall (fits 2).



## Step 2: Choose battery / battery charging accessories

### 1-slot Charger

**SAC9500-100CES**  
1Slot battery  
charger (US)



**SAC9500-100CES (US)**  
**Includes:** 1Slot battery  
charger SAC9500-1001CR  
and P/S PWRS-14000-148R  
and US AC line cord 23844-  
00-00R.

**SAC9500-101CES (INTL)**  
**Includes:** 1Slot battery  
charger SAC9500-1001CR  
and P/S PWRS-14000-148R.  
Buy 3 wire AC cord  
separately.

### Desk Mount Ready

**SAC9500-400CES**  
Desk mount ready (US)



**SAC9500-400CES (US)**  
**Includes:** 4Slot battery charger SAC9500-  
4001CR, Desk Mount KT-11664-01R,  
P/S PWRS-14000-148R and US AC cord  
23844-00-00R.  
**SAC9500-401CES (INTL)**  
**Includes:** 4Slot battery charger SAC9500-  
4001CR, Desk Mount KT-11664-01R and P/S  
PWRS-14000-148R. Buy 3 wire AC cord  
separately.

### Wall Mount Ready

**SAC9500-420CES**  
Wall mount ready (US)



**SAC9500-420CES (US)**  
**Includes:** Four 4Slot battery chargers SAC9500-4001CR, Two  
Wall Mounts KT-116362-01R, P/S PWRS-14000-241R, 4-way  
DC cord 25-85992-01R and US AC cord 23844-00-00R.  
**SAC9500-421CES (INTL)**  
**Includes:** Four 4Slot battery chargers SAC9500-4001CR, Two  
Wall Mounts KT-116362-01R, P/S PWRS-14000-241R, 4-way  
DC cord 25-85992-01R. Buy 3 wire AC cord separately.

### Telco Mount Ready



**SAC9500-431CES**  
Telco mount ready (INTL)

**SAC9500-230CES (US)**  
**Includes:** Two 4Slot battery chargers SAC9500-4001CR, 19"  
Rack Mount, P/S PWRS-14000-241R, 4-way DC cord 25-  
85992-01R and US AC cord 23844-00-00R.  
**SAC9500-430CES (US)**  
**Includes:** Four 4Slot battery chargers SAC9500-4001CR, Two  
19" Rack Mounts, P/S PWRS-14000-241R, 4-way DC cord 25-  
85992-01R and US AC cord 23844-00-00R.  
**SAC9500-431CES (INTL)**  
**Includes:** Four 4Slot battery chargers SAC9500-4001CR,  
Two 19" Rack Mounts, P/S PWRS-14000-241R and 4-way DC  
cord 25-85992-01R. Buy 3 wire AC cord separately.

## Step 3: Choose cables/adapters

### USB/Charge Cable



**25-116365-03R**  
USB/charging cable. Requires power supply PWRS-14000-148R and grounded AC cord for charging

### Modem Cable



**25-116367-03R**  
MC9500 modem adapter cable. Required to use the modem dongle, MDM9000-100R for analog connectivity.

### Modem/Charge Cable



**25-116370-02R**  
Modem adapter cable. Can be used to charge or with MDM9000-100R (Modem module) to simultaneously sync and charge.

### DEX Cable



**25-116366-03R**  
DEX cable, enables transmission of data between the MC95 and the customer's inventory system at the time of delivery.

### Vehicle Charge Cable



**VCA9500-02R**  
Auto charge cable, charges the MC95 or the vehicle battery charger. Includes adapter module VAM9500-100R.

**VAM9500-101R**  
Spare adapter module, for use with the auto charge cable VCC0000-01R.

### Headset Adapter Cable



**25-155758-01R**  
MC95 headset adapter cable (quick disconnect). Required to attach the RCH51 rugged headset.

## Step 4: Choose carrying accessories

### Fabric Holster



#### **SG-MC9521110-01R**

Fabric holster , includes shoulder strap. It can also be used with a belt. For rotating head and straight shooter configurations.

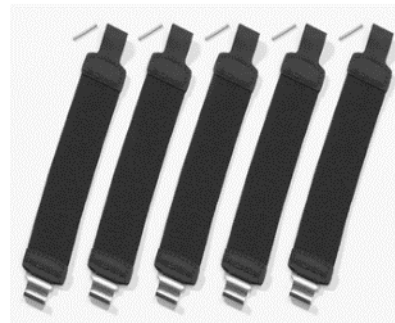
### Plastic Holster



#### **SG-MC9511110-01R**

Plastic holster, secures to a belt. For rotating head and straight shooter configurations.

### Hand Straps



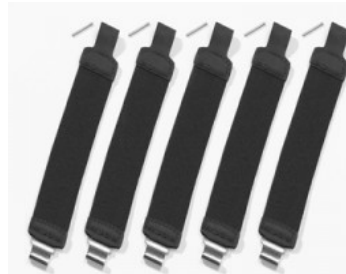
#### **SG-MC9523043-01R**

Spare hand straps with metal buckle (pack of 5).



#### **SG-MC9523043-02R**

Spare hand straps with plastic buckle (pack of 5). Includes rework kit.



#### **SG-MC9523043-03R**

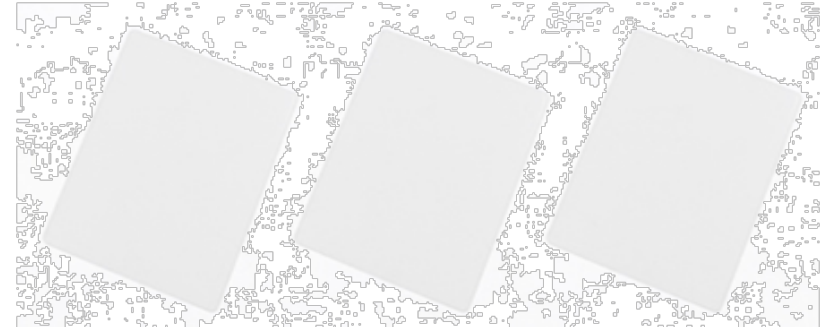
Spare hand straps with metal buckle and re-enforced stitch (pack of 5). Includes rework kit.

## Step 5: Choose other accessories

### Screen Protectors

**KT-122010-01R**

MC95 spare screen protectors.  
Pack of 3



**KT-122010-01R**  
Spare Screen Protectors (3Pk)

### Stylus Kits

**STYLUS-00006-03R** Spare stylus (plastic non spring loaded) 3 pack

**STYLUS-00006-09R** Spare stylus (plastic non spring loaded) 9 pack

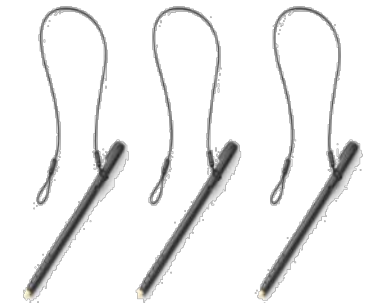
**STYLUS-00006-50R** Spare stylus (plastic non spring loaded) 50 pack

**KT-122016-03R** Spare spring loaded stylus  
3 Pack

**KT-122018-50R** Spare spring loaded stylus  
50 Pack



**STYLUS-00006-03R**  
Plastic Stylus (3Pk)



**KT-122016-03R**  
Spring Loaded Stylus (3Pk)



# MC9500 IHV Guide





## Step 6: Choose 3rd party accessories

### Storage Options

#### ATP MicroSD Cards



##### **AF1GUDI-MOT1-1P**

ATP 1GB Industrial Grade (1 pack) microSD flash memory card designed and tested for rugged mobile computing and intensive program/erase operation. Also available at 10 pack option (Product ID **AF1GUDI-MOT1-10P**)

2GB, 4GB and 8GB storage options are available in single and 10 pack variants.

**AF2GUDI-MOT1-1P**- 2GB single pack

**AF2GUDI-MOT1-10P**- 2GB 10 packs

**AF4GUDI-MOT1-1P**- 4GB single pack

**AF4GUDI-MOT1-10P**- 4GB 10 packs

**AF8GUDI-MOT1-1P**- 8GB single pack

**AF8GUDI-MOT1-10P**- 8GB 10 packs

\*\*Note: The ATP MicroSD cards can be ordered from Motorola

### Connectivity Options

#### Portsmith USB to Ethernet Adapter



##### **PSA1U1E**

This compact, durable and efficient USB to Ethernet Adapter can quickly and easily add High Speed networking access to MC9500-K

## Step 6: Choose 3rd party accessories

### Trigger Handle

#### TIS Trigger Handle



#### **23-95-09-TG-01**

TIS Trigger handle for MC95, makes the use of the device as warehouse scanners significantly more ergonomic and comfortable

### Holster for Trigger Handle

#### Agora Holster for Trigger Handle



#### **SZ2764DW**

Agora Trigger Handle Holster helps to cover, protect and carry the MC9500 while using the TIS trigger handle



## Step 6: Choose 3rd party accessories

### Brodit/Proclip Vehicle Cradle



**249001**

Active Holder with Cigarette  
Lighter Cable. Compatible  
with MC95.

### Brodit/Proclip Vehicle Cradle



**249002**

Active Holder for Fixed  
Installation. Compatible with  
MC95.