

BarTender Cloud[™]

Simple. Easy. Powerful.



BarTender Cloud[™] is a next generation SaaS labeling solution to create, manage, and print labels from anywhere, anytime without the need for additional IT infrastructure and resources. It's simple and easy to use with the power of BarTender[®].

Why labeling is moving to the cloud:

- ▶ Fast deployment
- ▶ Easily scale your label printing operations
- ▶ Reduced IT maintenance & resource cost
- ▶ Pay for only what you print
- ▶ Quickly improved labeling

Elevate all aspects of your labeling operations



WAREHOUSE

On-the-spot printing of work-in-progress, pick lists, distribution, receiving, asset tracking and baggage tagging labels



EXTERNAL SUPPLIERS

Easily set up and control label printing at the supplier or third-party logistics location



MANUFACTURING

Standardize asset and facility management and traceability labeling across multiple locations



PRODUCT IDENTIFICATION

On-demand product, shelf and price (food ingredient/allergen) labeling at each store location



TRANSPORTATION & LOGISTICS

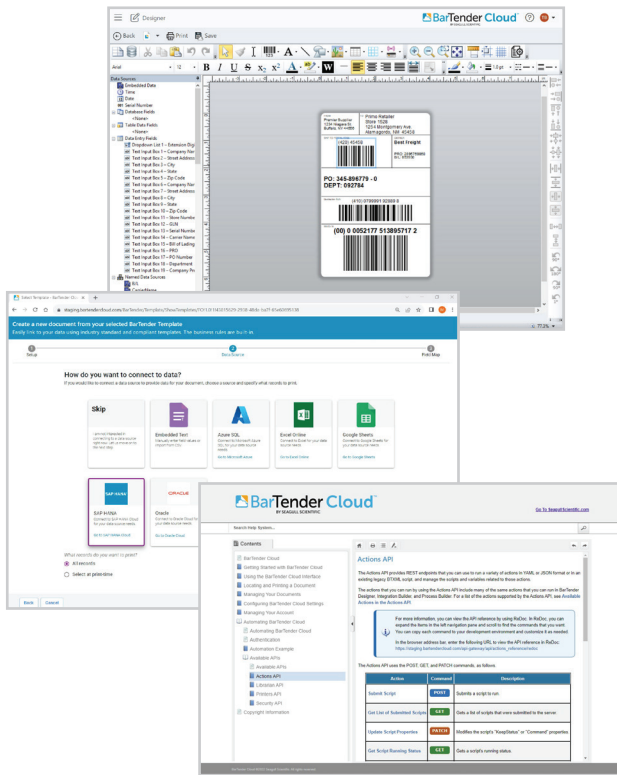
Accurate shipping labels printed right in front of the pallet, parcels or customer



RETAIL

Standardized retail signage, product identification, or basic logistics labels printing from any of your locations

A simpler way to print, an easier way to manage



Print and manage your labels efficiently

- ▶ Optimized, high performance printing from desktop and mobile devices – let us manage printer drivers

Design labels to your needs

- ▶ Use the only cloud-based label designer to easily and quickly design any label template - no software install required

Easily connect your data

- ▶ Easily connect your cloud label data for increased accuracy and traceability

Integrate to any business applications

- ▶ Seamlessly integrate with your ERP, WMS or MES or business application using the BarTender REST API or with pre-built connectors to Dynamics 365 ERP systems.

Manage your security and systems

- ▶ Secure centralized role-based management. Monitor and track your printing and usage history.

Access on-demand reliable performance

- ▶ Label printing available whenever and from wherever you need it



Revolutionize the way you print and manage labels

Unparalleled mobility. Minimized IT burden.
Centralized tracking and insights.

Americas:
Sales@SeagullScientific.com
+1 425 641 1408

EMEA:
EMEA_Sales@SeagullScientific.com
+34 91 198 4600

APAC:
AsiaSales@SeagullScientific.com
+886 70 1018 4700

Japan:
JapanSales@SeagullScientific.com
+81 3 4567 0091