



N1
OEM Scan Engines

Features

Our Smallest Engine Yet.

By decoding via an embedded chip instead of a separate processor, Newland has packed impressive scanning speed and performance into a compact design. At only 21.5 x 9 x 7mm, the N1 is the slimmest solution in the range. Its dressed down design offers both great value and a sleek integration when space is limited.

Newland's 6th Generation UIMG technology.

The N1 is armed with Newland's latest scanning technology, including our new decoder chip 0610. By leveraging our own technology, Newland has further perfected the engine's overall scan performance, supporting all common 1D, 2D and Aztec codes.

Outstanding Power Efficiency.

The N1 can aim, illuminate and decode barcodes while drawing as little current from the host device as possible. It prolongs battery life

compared to like-for-like scanners, as well as offering an eco-conscious solution. This makes it the ideal choice for portable solutions.

Long Barcode Support.

The N1's wide scan angle and versatile depth of field ensures a successful scan in nearly all situations and settings. The engine particularly excels at decoding long barcodes up close, often a prime requirement in ticket validation inside of a printer or other types of housing.

EasySet Configuration.

The N1 is compatible with our master configuration software EasySet. Built for Windows OS, this software helps simplify the process of testing and deploying configurations as well as updating the firmware.

Suggested industries



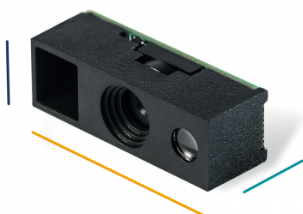
Healthcare



Industrial



Manufacturing



7 mm

21.5 mm

9 mm

N1 Technical specifications

Performance

Decoder	ASIC (0610)
Image Sensor	640x480 CMOS
Illumination	White LED
Aiming	Red LED (625nm)
Depth of Field EAN 13 (13mil)	60-350mm
Depth of Field Code 39 (5mil)	40-150mm
Depth of Field PDF417 (6.67mil)	50-125mm
Depth of Field Data Matrix (10mil)	45-120mm
Depth of Field QR (15mil)	30-170mm
Minimal Print Contrast	25%
Scan Angle Roll	360°
Scan Angle Pitch	±60°
Scan Angle Skew	±60°
Field of View Horizontal	42°
Field of View Vertical	31.5°

Data Capture

1D	All major 1D symbologies, including Code 128, EAN-13, EAN-8, Code 39, UPC-A, UPC-E, Codabar, Interleaved 2 of 5, ITF-6, ITF-14, ISBN, ISSN, Code 93, UCC/EAN-128, GS1 Databar, Matrix 2 of 5, Code 11, Industrial 2 of 5, Standard 2 of 5, AIM128, Plessey, MSI-Plessey.
2D	All major 2D symbologies, including PDF417, QR Code, Micro QR, Data Matrix, Aztec.

Physical

Dimensions (mm)	21.5(W) x 9.0(D) x 7.0(H)mm (max)
Weight	1.2g
Interfaces	TTL-232, USB
Input Voltage	3.3VDC±5%
Current @ 3.3VDC Operating	138mA (typical)
Current @ 3.3VDC Standby	11.8mA

Environmental

Ambient Light	0~100,000lux (natural light)
Operating Temperature	-20°C to 55°C (-4°F to 131°F)
Storage Temperature	-40°C to 70°C (-40°F to 158°F)
Humidity	5% to 95% (non-condensing)

Accessories

Standard	FPC 75mm
Optional	EVK3030-U, USB cable, RS-232 cable

Newland EMEA HQ

+31 (0) 345 87 00 33

info@newland-id.com

newland-id.com

Feel free to contact us or a partner near you

visit newland-id.com/partners

Specifications are subject to change without notice

© Newland EMEA 2022, all rights reserved

N1 Technical specifications

Software

Configuration Tools	EasySet
---------------------	---------

Certifications

Hardware	CE EMC Class B, RoHS2.0, IEC62471, FCC Part15 Class B
----------	---

Warranty

Standard	2 years
----------	---------

Newland EMEA HQ

+31 (0) 345 87 00 33
info@newland-id.com
newland-id.com

Feel free to contact us or a partner near you

visit newland-id.com/partners

Specifications are subject to change without notice

© Newland EMEA 2022, all rights reserved