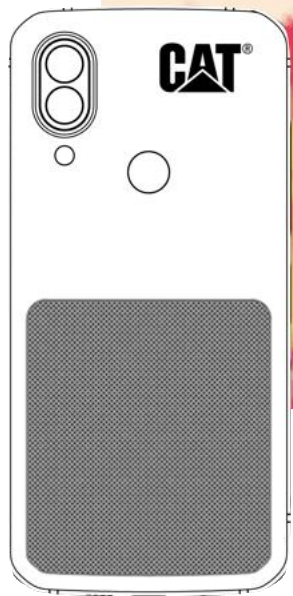


THE **ULTIMATE** WORK PHONE.

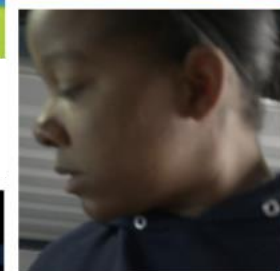
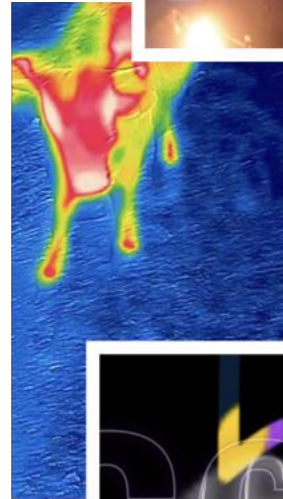
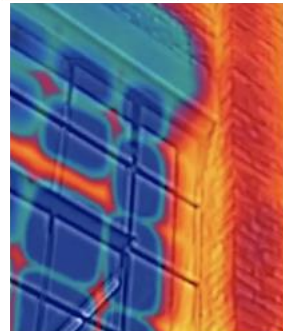
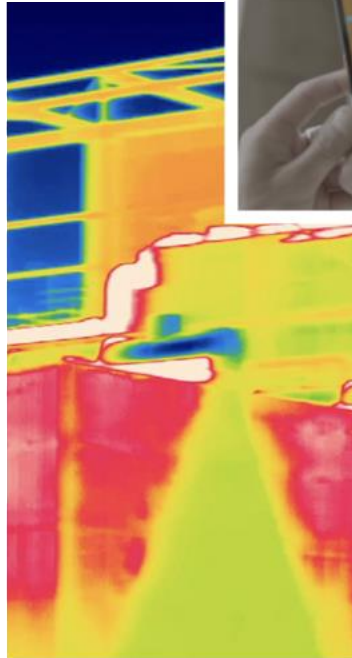
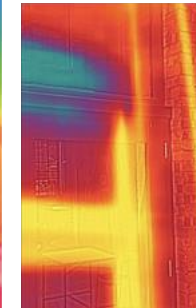
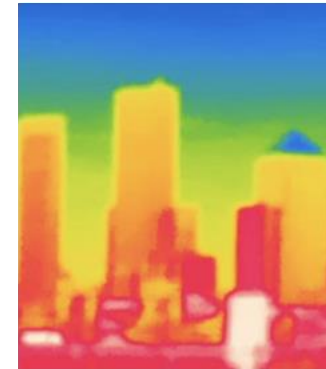
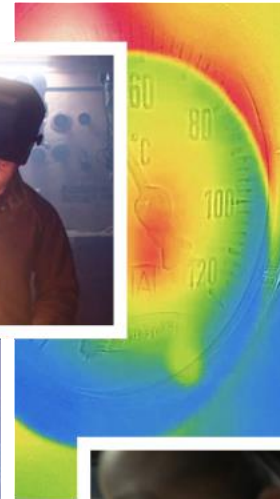
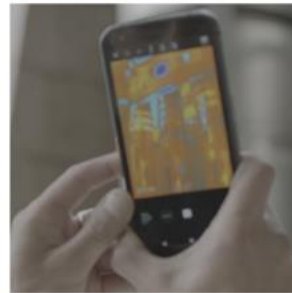


INTRODUCING THE NEW
CAT® S62PRO

NEXT GENERATION THERMAL

HIGHEST RESOLUTION FLIR LEPTON
AVAILABLE TODAY

Game-changing professional picture quality





CAT S60

World's 1st Mobile with
integrated thermal 2016

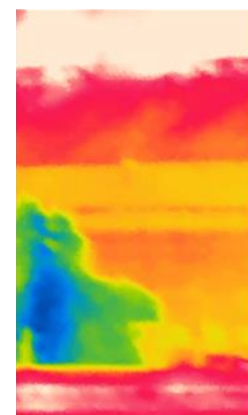
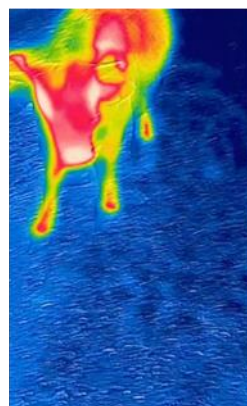
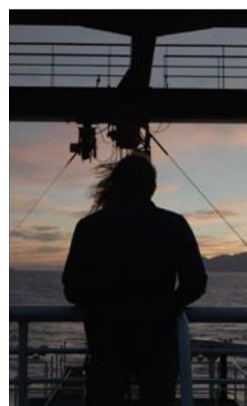
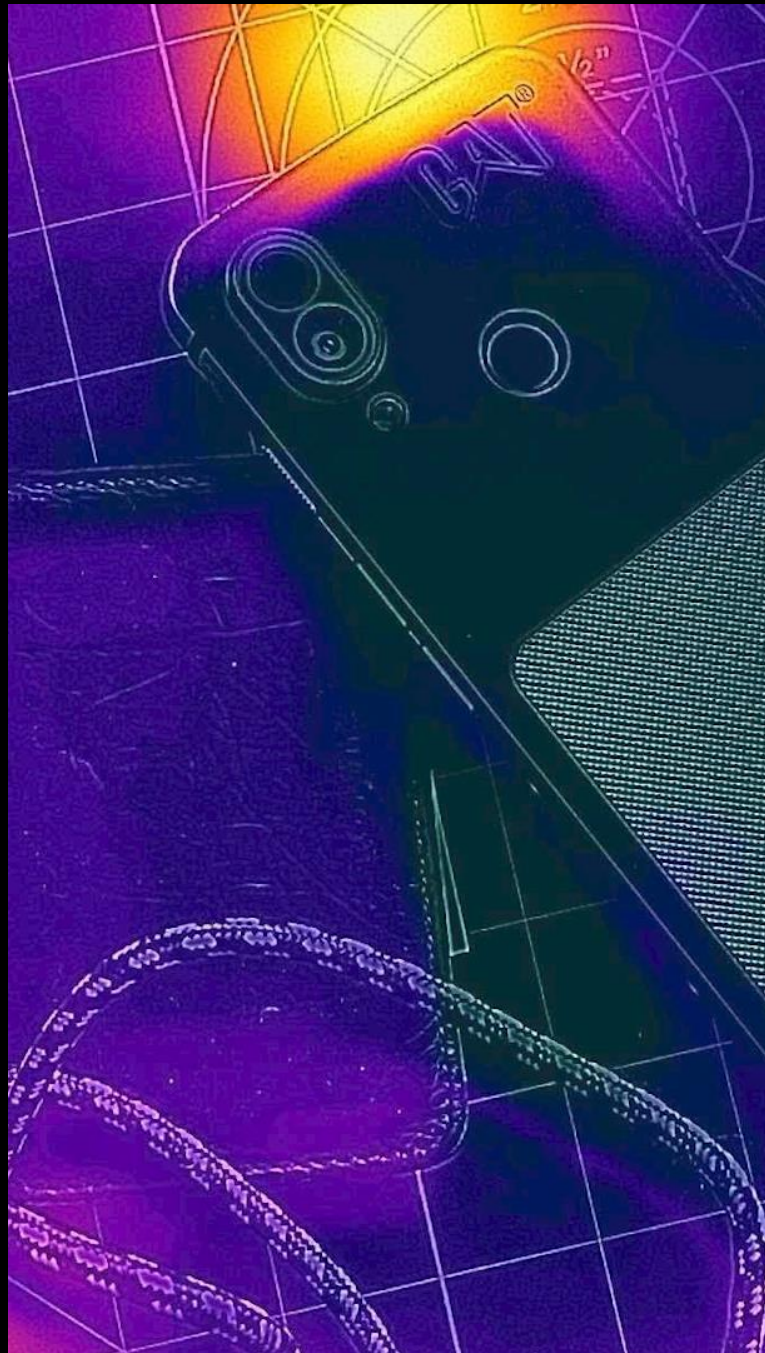
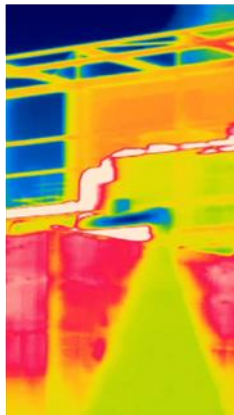
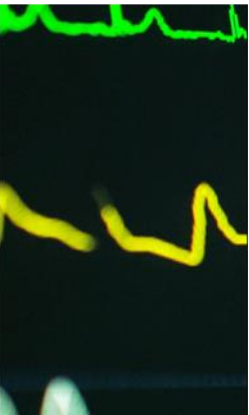
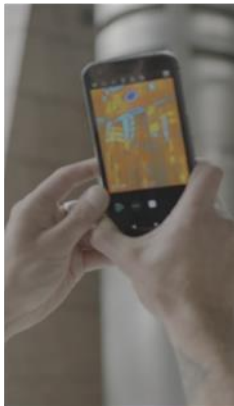
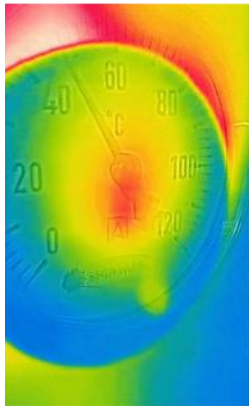
For 5 years we've led and dominated the **thermal mobile** market with FLIR

IN 2020 WE'RE DOING IT AGAIN

Our loyal and delighted customers have been asking 'what's next?'

Our answer is the S62 PRO with FLIR LEPTON 3.5 SENSOR

THE **ULTIMATE** WORKPHONE





CAT® S62 PRO

THE **ULTIMATE** WORK PHONE

The most advanced professional thermal imaging smartphone in the rugged world

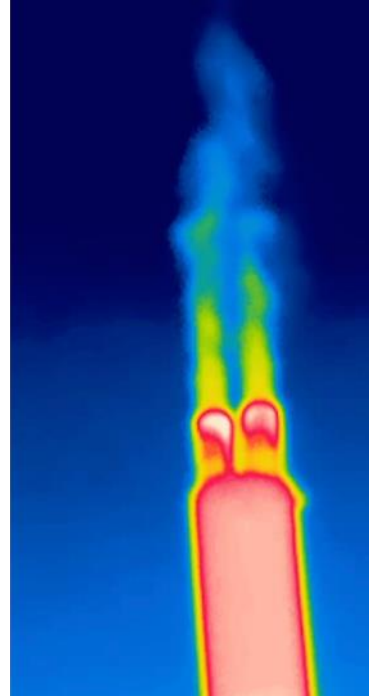
The pinnacle of innovation, functional design and rugged durability



GAME-CHANGING PROFESSIONAL PHOTO QUALITY

POWERED BY **FLIR**

CAT® PHONES 



BEST-IN-CLASS INTEGRATED THERMAL CAMERA

- Lepton 3.5 professional grade camera
- 1440x1080 HD output with VividIR
- MSX linear overlay from visual cam
- Alpha blending (contextual reference)
- Measurable range: -20°C to 400°C

Highest resolution FLIR Lepton available today

400% increase in number of thermal pixels

10% increase in Screen Size

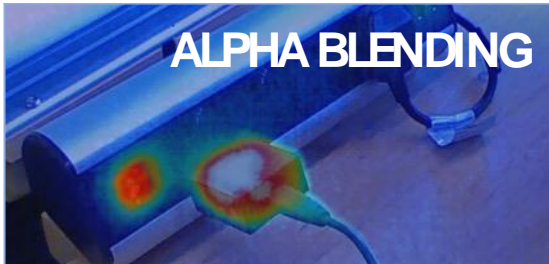
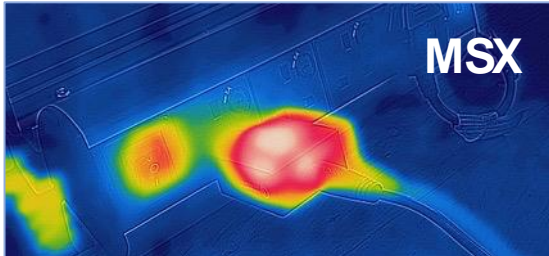
Enhanced image quality, sharper image, higher thermal resolution

Only phone in world with Lepton 3.5 sensor (exclusivity 12 months)



THERMAL IN DETAIL

CAT® PHONES



BEST-IN-CLASS TOOLS FOR CONTEXTUALISING IMAGES

- MSX™ linear detail overlay from visual camera, with variable intensity
- Alpha-blending of visual and thermal image



PROFESSIONAL THERMAL IMAGING TOOLSET

- Movable spot meters
- Multiple, custom regions of interest
- Isotherms and fixed temperature visualisation ranges
- Live monitoring, still image capture, video, and time lapse
- 9 colour palettes
- PDF reporting



SUPERIOR THERMAL IMAGE QUALITY

- The best quality thermal image on a mobile device
- 1440 x 1080 HD output, enhanced with VividIR™
- Huge 4x improvement in input resolution from the Cat S61: 160 x 120 (12µm pixel size)
- 30% smaller pixel size 120 microns
- 10% wider Horizontal Field Of Vision, 57 degrees



S62 PRO

CAT® S62 | PRO

THE **ULTIMATE** WORK PHONE

Professional-grade thermal imaging

Powered by the FLIR Lepton 3.5 sensor
Measurable Range: -20°C to 400°C
400% increase in the number of thermal pixels

Beyond Rugged:

IP68 and Mil-Spec 810H:

Dustproof and drop proof to 1.8m, vibration, sand, salt mist and pressure resistant

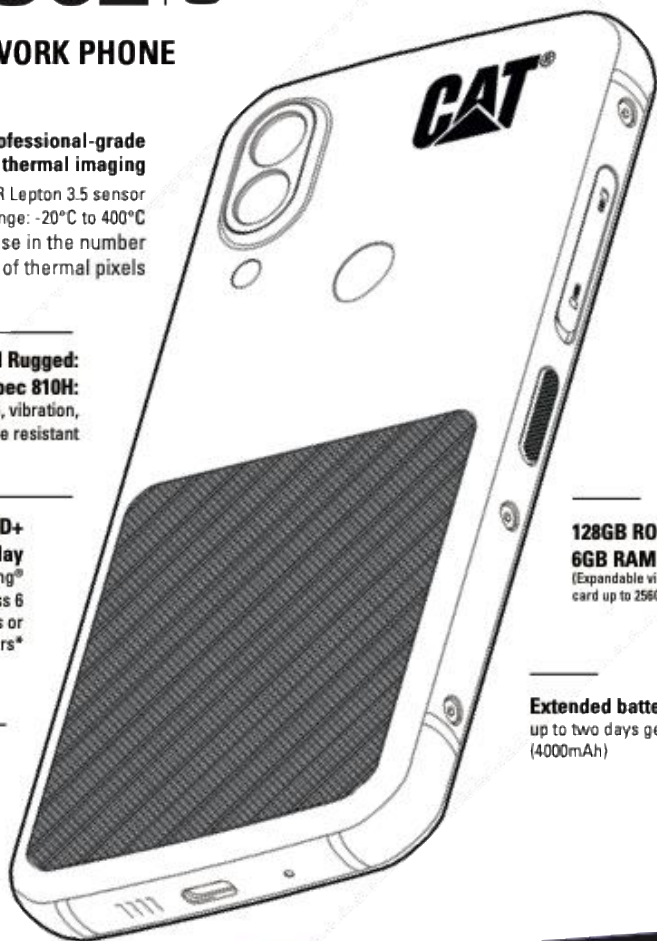
5.7" FHD+

18:9 display

Protected by Corning® Gorilla® Glass 6
Use with gloves or wet fingers*

Modern rugged design

Qualcomm Snapdragon 660
Google Android™ 10
(with upgrade to 11)



128GB ROM

6GB RAM

(Expandable via microSD™ card up to 256GB)

Extended battery life

up to two days general use (4000mAh)

NEXT GENERATION THERMAL

The Cat S62 Pro is an advanced tool, providing instant access to professional-grade thermal imaging in a rugged smartphone - always on, always ready

The pinnacle of innovation, elegant design and rugged durability

DIMENSIONS & WEIGHT

Dimensions: 158.5 x 76.7 x 11.9mm

Weight: 248g

BEYOND RUGGED

Ingress Protection IP68: Sand, dust and dirt resistant

Waterproof: Up to 1.5m for 35 minutes

Drop Tested: Up to 1.8m (6ft) onto steel

MILSPEC810H: Thermal shock: handles low to high temperature differences between -25°C (-13°F) to 55°C (131°F) for up to 24hrs*

THERMAL IMAGING

Lepton 3.5 professional grade camera

1440 x 1080 HD output with VividIR

MSX linear overlay from visual cam

Measurable range: -20°C to 400°C

HYGIENE

Repeated bleach wipe test with 3000 cycles

Pressurised alcohol abrasion tests at 500gF/cm2 over hundreds of cycles

Prolonged real world chemical mix exposure and susceptibility testing

BATTERY

Capacity: 4000mAh (supports fast charging)

Type: Non removable Lithium Ion

General Use: up to 2 days

DISPLAY

Super Bright 5.7" Display - FHD+ (1080 x 2160) 18:9

TFT LCD, wet finger/glove-on working technology**

DISPLAY COVER

Corning® Gorilla® Glass 6

PLATFORM (OS)

Google Android™ 10 (with upgrade to 11)

PROCESSOR

Qualcomm Snapdragon 660 Octo Core 2.0GHz

MEMORY

128GB ROM

6GB RAM

(Expandable via microSD™ card up to 256GB)

OTHER

Apps: Office Suite, Toolbox, OnGuard Solo

CAMERA

Integrated FLIR thermal camera

Rear-facing: 13MP sensor, f/2.0, PDAF

Front-facing: 8MP sensor

MULTIMEDIA

Audio: FM Radio, music player,

Video Recording: 1080p at 30fps

Video Playback: 1080p at 30fps

NETWORK

4G LTE CAT 13, VoLTE, VoWiFi, VoLTE

LTE Bands: 1, 2, 3, 4, 5, 7, 8, 20, 28, 38, 40;

DATA SPEED

Maximum Downlink Data Rate: 400Mbps

Maximum Uplink Data Rate: 150Mbps

CONNECTIVITY

Bluetooth®: 5

NFC: Yes (Android Pay™)

Wi-Fi®: 802.11 a/b/g/n/ac (2.4 & 5GHz)

USB: USB 2.0 / Type C USB (waterproof), quick charge 4, USB-OTG

SIM Type: Nano SIM, dual and single SIM variants

GPS: GPS, AGPS, Glonass, BeiDou (variant dependant), Galileo

SENSORS

FLIR Thermal Lepton 3.5

Fingerprint

NFC

Proximity

GPS

Ambient Light

Compass

Gyro

DESIGN FEATURES

Programmable Key with PTT mode

Physical power and volume (up/down) keys

Hard-wearing, non-slip rubberized TPU back

LED notification (3 colours)

ENTERPRISE

Android Enterprise support (AE test suite, passed)

Zero-touch support

90-day security patches for 2yrs + 1yr ESMR cover

BMM enrolment and key policy provisioning tested with:

VMware Workspace ONE, IBM MaaS 360, SOTI, Mobile Iron

CAT® PHONES

