

PRODUCT SPEC SHEET

ZEBRA AP 6511E 802.11N WALLPLATE ACCESS POINT



ZEBRA AP 6511E 802.11N WALLPLATE ACCESS POINT

POWERFUL WI-FI FOR HOTELS, DORMITORIES AND HOSPITALS

The AP 6511E was designed to be installed in any location; plenum space, flush to a wall surface, or over a structured wiring telecom box. This intelligent product design allows the wireless LAN to be installed in minutes, not hours, to support a range of mobile devices such as laptops, tablets, and smartphones. In multiple dwelling units such as hotels; high attenuation fire walls, mirrors, plumbing and ceramic tile can require extensive planning for the wireless LAN. Because the AP 6511E can be installed by standard service personnel using existing CAT5/6 cabling in the wall, deployment is a snap. The AP's sleek "hide in sight" design and small size blends with the room aesthetics, very important for hospitality markets

ENTERPRISE-GRADE WIRELESS FOR MIDSIZE BUSINESSES

WiNG Express brings the power of enterprise award-winning WiNG 5 architecture to your midsize businesses. With WiNG Express, your business now has access to latest wireless technology and always-on capability trusted by large enterprise businesses. In addition, the portfolio contains purpose built enterprise-grade products for midsize businesses that will allow customers to scale their network with their business.

WiNG EXPRESS FAST PROVISIONING

WiNG Express products can be configured and deployed in about 5 minutes. After powering on the access point, the user can connect to "WiNGExpress" SSID and go to www.zebra.com/wingexpress to configure the access point. Once an access point is configured, the user can enable the virtual controller feature and let the access point configure and manage additional access points by simply adding them to the network.

WiNG EXPRESS USER INTERFACE

WiNG Express is Zebra's powerful enterprise-class WLAN operating system wrapped in an easy-to-use and easy-to-understand graphical user interface that makes end-to-end deployment and management of WLAN network easy for midsize businesses. The user interface provides a concise menu with time tracked network and client information. As such, WiNG Express User Interface empowers midsize businesses with valuable information available to enterprise customers in a meaningful way; allowing you to leverage wireless applications to drive business.

OPERATIONAL FLEXIBILITY

For midsize businesses, the WiNG Express portfolio provides the ability to deploy an enterprise-grade network that is affordable and scalable with ease. Businesses with up to 25 access points get the power of centralized management — without the need to purchase and manage a controller. Deployment of WiNG Express Manager can help deploy a network with different WiNG Express Access Points and scale with more than 25 access points.

MODULAR FLEXIBILITY

The AP 6511E features a snap-in port for any keystone style connector e.g. RJ11 or TV coax, so multiple services can be supported on a single integrated AP 6511E. Because guest rooms often require additional Ethernet ports for voice service, minibar monitoring or even guest wireline; a snap-on three port Ethernet module is available to easily expand

WiNG EXPRESS

For midsize businesses, WiNG Express portfolio provides the ability to deploy an enterprise grade network that is affordable and scalable with ease. Businesses with up to 25 access points get the power of centralized management — without the need to purchase and manage a controller. Deployment of WiNG Express Manager can help deploy a network with different WiNG Express Access Points and scale with more than 25 access points.

For features supported by the WiNG Express portfolio, please see the WiNG Express portfolio brochure.

the number of available ports. The rapid installation is predictable and repeatable across multiple properties. Installation in minutes rather than hours will dramatically lower deployment costs

ARCHITECTURE FLEXIBILITY

AP 6511E includes a self optimizing algorithm of a virtual controller, which allows network services to scale securely without configuring additional access points. With virtual controller enabled, midsize businesses can manage an entire network of up to 25 access points from a single access point. Virtual controller automatically configures its peer access points on the local network and allows management of all access points on a network.

In addition, midsize businesses can scale their network with WiNG Express Manager, which can expand a network to include different WiNG Express access points across multiple sites supporting up to 1,024 access points.

For more information on how the AP 6511E can benefit your business, please visit us on the web at www.zebra.com/wingexpress or access our global contact directory at www.zebra.com/contact

AP 6511E SPECIFICATIONS CHART

AVAILABLE INTERFACES		WLAN AND NETWORKING	
Wireless Interface	Single radio; 802.11a/b/g/n; 2.4Ghz or 5.2Ghz	BSS	8 BSSIDs, 16 SSIDs
LAN Ethernet port	IEEE 802.3 10/100Mb auto-sensing via 8-pin header	Virtual AP	Per WLAN beacon en/dis, client isolation, SSID authentication, encryption, bitrate, VLAN ID, WMM
Uplink LAN Ethernet	IEEE 802.3 10/100Mb auto-sensing	VLANs	4000 VLANs; VIDs 1 - 4095
Snap-in port	Supports any Keystone or QuickPort® style connector	SECURITY	
WIRELESS SPECIFICATIONS		AP Mgmt	SSH, HTTPS, SNMP v3
Medium	DSSS, OFDM, MIMO	WLAN	WEP static, WEP Dynamic (802.1x) WPA/TKIP Personal and Enterprise WPA2/TKIP/AES Personal and Enterprise, all EAP types
Standards	802.11a, 802.11b, 802.11g, 802.11n draft 2.0	POWER	
Data Rates	802.11b: 1, 2, 5.5, 11Mbps 802.11g: 6,9,12,18,24,36,48, 54Mbps 802.11a: 6,9,12,18,24,36,48, 54Mbps 802.11n: MCS 0-15 up to 300Mbps	AP+1 LAN port ~5.5W typical, AP+4 LAN ports ~8W 802.3af compliant uplink LAN port	
Operating Frequencies	2.4GHz: 2400 -2483.5 MHz 5.2GHz: 5150 - 5250 Mhz; 5725 - 5850 Mhz Actual operating frequencies depend on national regulatory limits	PHYSICAL	
Transmit Power settings	6dBm to 24dBm, in 1dB increments; Actual Tx power dependant on national regulatory limits	4.9" x 2.7" x 1.1" (124mm x 70mm x 29mm). 12oz (0.34Kg) Two single color status LEDs; power, error, packets, operating frequency	
Receiver Sensitivity	2.4Ghz: 802.11b 1Mb = -97dBm;	ENVIRONMENTAL	
		0 - 40 degrees Celsius, 5% to 90% NC	

802.11g 54Mb = -83dBm
 802.11n MCS15 40Mhz = -72dBm
 5.2GHz: 802.11a 6Mb = -99dBm,
 54Mb = - 84Bm
 802.11n MCS15 40Mhz = -74dBm

Antenna Configuration

Two internal omni-directional, 2x2 MIMO
 operation 2dBi peak in 2.4 Ghz;
 4.5dBi peak gain
 in 5.2 Ghz

ORDERING INFORMATION

Part Number : AP-6511E-60010-US

Description : Single radio 802.11a/b/g/n Wallplate AP. Low profile. One Ethernet PD uplink port, one FE LAN port included. Optional Ethernet Module.
 US-only version supports FCC channel set.

Part Number : AP-6511E-60010-WR

Description: Single radio 802.11a/b/g/n Wallplate AP. Low profile. One Ethernet PD uplink port, one FE LAN port included. Optional Ethernet Module. WR version supports individual country channel sets as required.

Part Number : KT-6511-0000D-WR

Description : Three port Fast Ethernet Module for AP-6511E

MOUNTING

Universal mounting bracket for worldwide telecom plates ; mounting options include over a telecom wall plate or flush surface mount

COMPLIANCE

FCC 15.247, 15.407 / EN300 328, EN 301 893; UL EU EN 60950-1 2nd Ed., ANZ C-Tick, UL 2043; FCC Part 15 Subpart B, EN 55022: 2006 + A1: 2007, ICES – 003 (Class B) EN 55024: 1998 + A1: 2001 + A2: 2003; EU RoHS Directive 2002/95/EC; CE, IC, FCC

* QuickPort is a registered trademark of Leviton Corporation

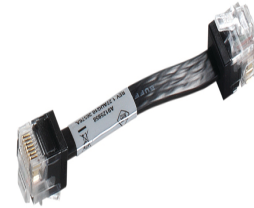
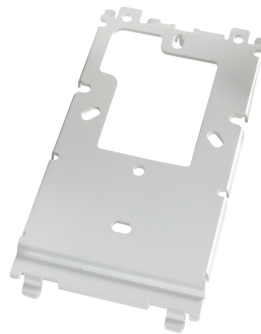
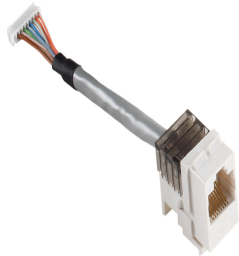
BASE AP

SNAP-IN ETHERNET PORT (INCLUDED)

MOUNT BRACKET (INCLUDED)

RJ-45 CABLE, 2" (50mm) (INCLUDED)

ETHERNET MODULE (KT-6511-0000D-WR)



POWERFUL

802.11 A/B/G/N, 2X2 MIMO, 26DBM

FAST

INSTALLS IN MINUTES

EASY

SELF OPTIMIZING VIRTUAL CONTROLLER



Part number: SS-AP6511E. Printed in USA 04/15. ©2015 ZIH Corp and/or its affiliates. All rights reserved.

Zebra and the stylized Zebra head are trademarks of ZIH Corp., registered in many jurisdictions worldwide. All other trademarks are the property of their respective owners.

ZEBRA TECHNOLOGIES