

# TSC

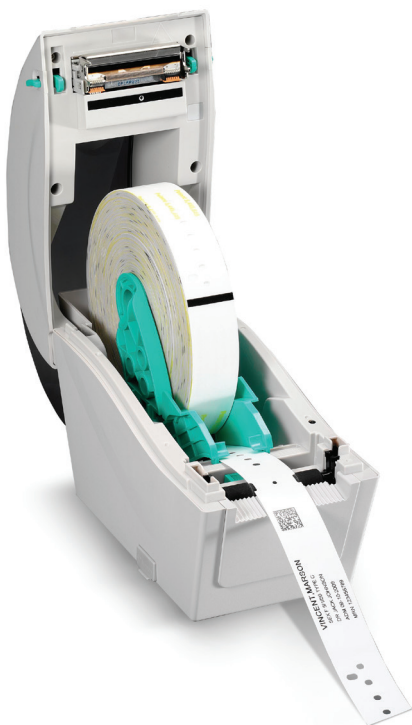
The Smarter Choice.

CELEBRATING 20 YEARS



## TDP-225W – Desktop Direct Thermal Wristband Printer

# EVERY FEATURE YOU NEED FOR MEDICAL AND ENTERTAINMENT WRISTBAND PRINTING



### KEY FEATURES

- Designed to hold 6.5" OD wristbands
- Front LCD display
- High quality double-walled clamshell design
- Easy media loading
- Up to 127 mm (5") per second print speed
- microSD Flash memory expansion up to 4 GB
- Ethernet and USB 2.0 connectivity standard
- Optional peel-off module, cutter module and down-time keyboard interface

### APPLICATIONS

- **Healthcare**
  - Patient ID Tracking
  - Hospital Admissions
  - Hospital Nursery
- **Entertainment & Hospitality**
  - Amusement Parks
  - Water Parks
  - Event Admissions
  - Night Club Age Verification
- **Other Markets**
  - Law Enforcement
  - Crowd Control
  - Animal ID
  - Restricted Area Access

## TDP-225W – Desktop Direct Thermal Wristband Printer

PRINTER MODEL	TDP-225W
Resolution	8 dots/mm (203 DPI)
Printing method	Direct Thermal
Max. print speed	127 mm (5")/second
Max. print width	52 mm (2.05")
Max. print length	2,286 mm (90")
Enclosure	Clamshell design with wall mount hole at the bottom cover
Physical dimension	109 mm (W) x 210 mm (H) x 260 mm (D) 4.29" (W) x 8.27" (H) x 10.24" (D)
Weight	1.2 kg (2.65 lbs)
Label roll capacity	165 mm (6.5") OD
Processor	32-bit RISC CPU
Memory	<ul style="list-style-type: none"> <li>• 4 MB Flash memory</li> <li>• 8 MB SDRAM</li> <li>• microSD card reader for Flash memory expansion, up to 4 GB</li> </ul>
Interface	<ul style="list-style-type: none"> <li>• USB 2.0</li> <li>• Internal Ethernet, 10/100 Mbps</li> <li>• USB host, for scanner or PC keyboard (factory option)</li> </ul>
Power	External universal switching power supply <ul style="list-style-type: none"> <li>• Input: AC 100-240V, 1A, 47-63Hz</li> <li>• Output: DC 24V, 2.08A, 50W</li> </ul>
LCD	Graphic type, 128 x 64 pixels, with back light
Operation switch, button LED	1 power switch, 1 feed button & 1 LED (3 colors: green, amber & red)
Sensors	<ul style="list-style-type: none"> <li>• Transmissive gap sensor</li> <li>• Black mark reflective sensor (position adjustable)</li> <li>• Head open sensor</li> </ul>
Real time clock	Standard
Internal fonts	<ul style="list-style-type: none"> <li>• 8 alpha-numeric bitmap fonts</li> <li>• Monotype Image® true type font engine with one CG Triumvirate Bold Condensed scalable font</li> </ul>
Bar code	<ul style="list-style-type: none"> <li>• 1D bar code Code 39, Code 93, Code 128UCC, Code 128 subsets A, B, C, Codabar, Interleave 2 of 5, EAN-8, EAN-13, EAN-128, UPC-A, UPC-E, EAN and UPC 2 (5) digits add-on, MSI, PLESSEY, POSTNET, China POST, GS1 DataBar, Code 11</li> <li>• 2D bar code PDF-417, Maxicode, DataMatrix, QR code, Aztec</li> </ul>
Font and barcode rotation	0, 90, 180, 270 degree
Printer language	TSPL-EZ™ (Compatible to EPL, ZPL, ZPL II)
Media type	Continuous, die-cut, black mark, fan-fold, notched, wristband (outside wound)
Media width	15 ~ 52 mm (0.59" ~ 2.05")
Media thickness	0.06 ~ 0.19 mm (2.36 ~ 7.48 mil)
Media core diameter	25.4 mm (1")
Label length	10 ~ 2,286 mm (0.39" ~ 90")
Environment condition	Operation: 5 ~ 40°C, 25 ~ 85% non-condensing Storage: -40 ~ 60°C, 10 ~ 90% non-condensing
Safety regulation	FCC Class B, CE Class B, C-Tick Class B, UL, CUL, TÜV/Safety, CCC
Environmental concern	Comply with RoHS, WEEE
Accessories	<ul style="list-style-type: none"> <li>• Windows labeling software CD disk</li> <li>• Quick start guide</li> <li>• USB cable</li> <li>• Power cord</li> <li>• External universal switching power supply</li> </ul>
Limited warranty	<ul style="list-style-type: none"> <li>• Printer: 2 years</li> <li>• Print head: 25 km (1 million inches) or 12 months which comes first</li> <li>• Platen: 50 km (2 million inches) or 12 months which comes first</li> </ul>
Factory options	• USB host, for scanner or PC keyboard
Dealer options	<ul style="list-style-type: none"> <li>• Peel-off module</li> <li>• Guillotine cutter (full cut and partial cut)</li> </ul>
User options	N/A



### CORPORATE HEADQUARTERS

**TSC Auto ID Technology Co., Ltd.**  
Tel: +886 2 2218 6789  
E-mail: printer\_sales@tscprinters.com

### LI ZE PLANT

**TSC Auto ID Technology Co., Ltd.**  
Tel: +886 3 990 6677  
E-mail: printer\_sales@tscprinters.com

### AMERICAS

**TSC Auto ID Technology America Inc. Corporate Office**  
Tel: +1 909 525 9779  
E-mail: sales@tscprinters.com

### Orlando Office

Tel: +1 407 704 8918  
E-mail: sales@tscprinters.com

### CANADA

**TSC Auto ID Technology America Inc.**  
Tel: +1 909 525 9779  
E-mail: sales@tscprinters.com

### MEXICO

**TSC Mexico Representative Office**  
Tel: +52 (33) 3836 6682  
E-mail: sales@idc-componentes.com

### BRAZIL

**TSC Brazil Representative Office**  
Tel: +55 (11) 9597 8098  
E-mail: sales@tscprinters.com

### EMEA

**TSC Auto ID Technology EMEA GmbH**  
Tel: +49 (0) 8106 37979 00  
E-mail: info@tsc.eu.com

### RUSSIA

**TSC Auto ID Technology EMEA GmbH**  
Tel: +7 915 422 8889  
E-mail: info@tsc.eu.com

### MIDDLE EAST

**TSC Auto ID Technology ME Ltd, FZE**  
Tel: +971 4 2533 069  
E-mail: info@tscmea.com

### ASIA PACIFIC

**TSC Auto ID Technology Co., Ltd.**  
Tel: +886 2 2218 6789  
E-mail: printer\_sales@tscprinters.com

### CHINA

**Tianjin TSC Auto ID Technology Co., Ltd.**  
Tel: +86 22 5981 6661  
E-mail: sale@tscprinters.com.cn

TSC is a trademark of TSC Auto ID Technology Co., Ltd.  
TSC Auto ID Technology Co., Ltd. is an ISO 9001/14001 registered company.  
© 2013 TSC Auto ID Technology Co., Ltd.  
Product models and Specifications are subject to change without notice.  
Contact your TSC sales representative for specific information.