



TOUGHBOOK CF-H2 FIELD. FULLY RUGGED FIELD TABLET.

TRANSFORMING THE WAY
MOBILE PROFESSIONALS WORK.

The Toughbook CF-H2 is a unique tool. Unique in its ability to transform the way mobile professionals work - wherever and whenever that might be. Designed to perform in the most challenging of environments, it connects field workers with the critical data, applications and digital tools they need to be more effective and more productive than ever before.

- Intel® Core™ i5-3427U vPro processor
- Genuine Windows® 7 Professional
- Intel HD 4000 graphics
- Vibration and shock resistant (MIL-STD 810G)*
- Water and dust resistant (IP65, MIL-STD 810G)*
- Extremely bright 10.1" transreflective plus LCD with Dual Touch and circular polarizer
- Lightweight form factor - weighing only 1.58kg
- Dual hot swappable batteries providing up to 7 hours battery life
- USB 3.0 SuperSpeed, LAN and Serial Port (depends on model)
- Integrated Barcode Reader options
- Smartcard Reader optional
- Camera, GPS or RFID optional

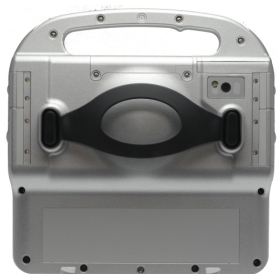
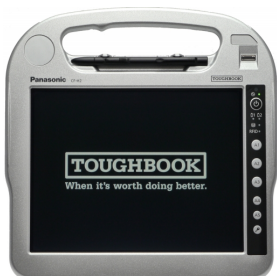
* Tested by an independent third party lab following MIL-STD-810G and IEC 60529, Sections 13.4, 13.6.2, 14.2.5 and 14.3.



MOBILE BUSINESS EXCELLENCE.

FOR PROFESSIONAL USERS WHO REQUIRE OPTIMUM MOBILITY, RELIABILITY AND CONNECTIVITY.

With its rugged, ergonomic design, long battery life and transfective sunlight view screen, the Toughbook CF-H2 field tablet is the ideal tool to access applications and data in the most difficult mobile environments.



Mobile Computing Platform	Intel® Core™ i5-3427U vPro™ processor (1.8GHz, 3MB Intel® Smart Cache, Intel® 7 series Express chipset QM77)	
Operating System	Genuine Windows® 7 Professional	
RAM	4GB DDR3L SDRAM (max. 8GB)	
Graphic Chip	Intel® HD Graphics 4000, UMA (Windows® 7 64bit max 1696MB, 32bit max 1547MB)	
Storage	320GB HDD (SATA) or 128GB SSD (Contact Smartcard Reader Model)	
LCD	10.1" sunlight-viewable transfective plus XGA Active Matrix (TFT) colour LCD with circular polarizer (up to 500cd/m ² transmissive and 6.500cd/m ² reflective brightness, depending on light conditions) and ambient light sensor	
Bluetooth™	Version 4.0 + EDR Class 1	
WLAN	Intel® Centrino® Advanced-N 6235 802.11 a/b/g/n compliant	
Sound	Monaural speaker, supporting Intel® High Definition Audio subsystem	
Input Devices	Dual Touch (resistive Touchscreen & Digitizer)	
	Buttons	Application 2 to 5 (depends on Model)
LEDs	Power, Battery 1 charge status, Battery 2 charge status, HDD status, RFID status	
Interfaces	External Display:	None (available at optional Cradle)
	Serial: (RS232C)	x1
	LAN:	x1 (depends on model)
	USB 3.0:	x1 (2nd USB 2.0 depends on model, eliminates LAN)
	Docking connector:	x1 Cradle I/O
	DC-IN	x1
Security	TPM (Trusted Platform Module, TCG V1.2 compliant)	
Power	AC Adaptor	Input: 100 V-240 V AC, 50 Hz/60 Hz, Output: 16 V DC, 3.75 A
	Battery Pack	Li-ion 7.2V, 3400 mAh x2 packs hot swappable
	Operating Time	Approx. 7 hours (MobileMark™ 2007, 60cd/m ² LCD brightness)
Dimensions (WxHxD)	274mm x 268mm x 58mm {10.8" x 10.6" x 2.3"}	
Weight	Approx. 1.58kg {Approx. 3.5lb} (including the hand strap)	
Optional Features	Barcode Reader	
	3G Mobile Broadband (HSPA+, 21Mbps)	
	Combined Contactless Smart Card (ISO 14443 Type A/B) and RFID (ISO 15693)	
	Contact Smartcard Reader	
	3MP Camera with Autofocus and LED light	
	GPS	
	Fingerprint Reader	
Accessories	AC Adaptor:	CF-AA6373A
	Battery Pack:	CF-VZSU53A
	4 Bay Battery Charger:	CF-VCBU11U
	Car-Charger:	CF-LND80S-FD (Type A, 80W,12-16VDC)
		CF-LND8024FD (EIAJ & Type A both 80W, 12
	Cradle (White):	CF-VEBH21U
	Cradle (Black):	CF-VEBH21KU
	Carrying and CDS Docking Solutions:	Please visit www.toughbook.eu
	Testing Standards	Water resistance test:
Dust resistance test:		IEC529 (JIS C0920) IP6X*, MIL-STD 810G 510.5, I & II*
Gravity drop resistance test:		MIL-STD 810G 516.6, IV (180cm* drop)
Vibration resistance test:		MIL-STD 810G 514.6, category 24*

Intel, the Intel logo, Intel Core, Intel vPro, Core Inside and vPro Inside are trademarks of Intel Corporation in the U.S. and other countries. Microsoft® and Windows® are registered trademarks of Microsoft Corporation of the United States and/or other countries. All other brand names shown are the registered trademarks of the relevant companies. All rights reserved. All working conditions, times and figures quoted are optimum or ideal levels and may differ as a result of individual and local circumstances.

* Tested by an independent third-party lab following IEC 60529, sections 13.4, 13.6.2, 14.2.5, 14.3

Computer Product Solutions (CPS) BU, Panasonic System Communications Company Europe (PSCEU), Panasonic Marketing Europe GmbH, Hagenauer Straße 43, 65203 Wiesbaden (Germany).